

**Components list for Bullbar:**

1-Aluminium Bullbar      1-Fitting Instructions      1-Steel Mounting Bar  
2-Aluminium side slash guard panels      1-Centre Lower Aluminium slash guard panel  
1-Length Pinch weld strip      6-M12 Bolts      6-M12 Nyloc nuts      12-M12 Washers  
8-M8 Bolts      8-M8 Washers      6-M6 Bolts      6-M6 Washers  
35-Metal-self drilling screws      4-Stainless steel screws      1- Cutting template

**Components list for sumpguard**

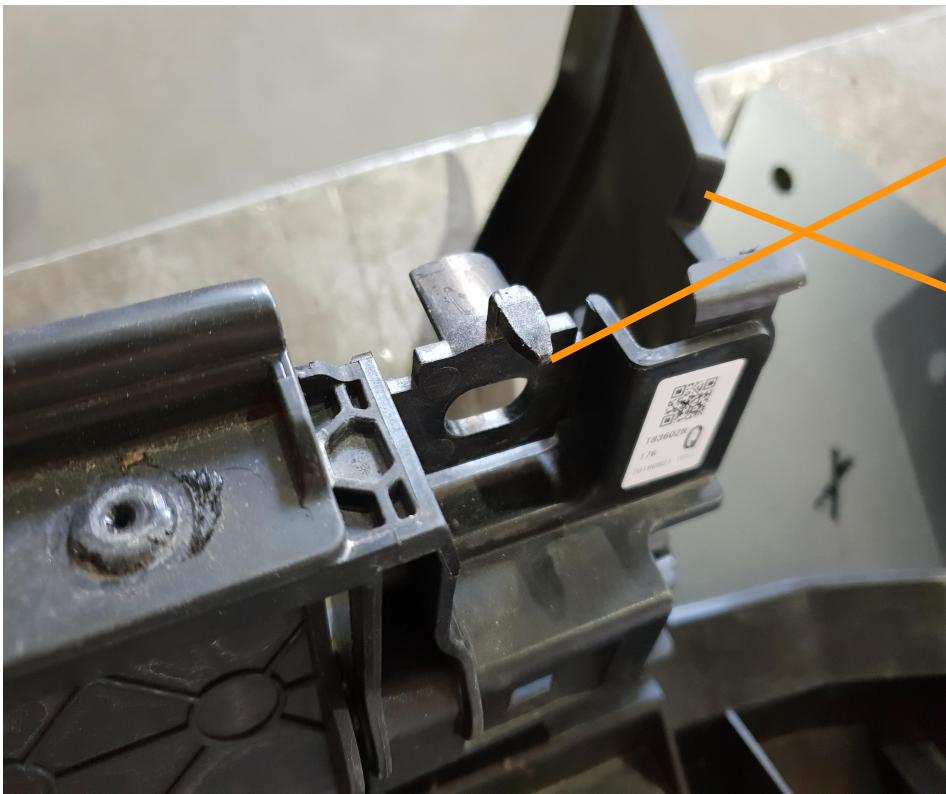
1-Aluminium Sumpguard      4-Nylon spacers w/ double sided tape  
2-M8 x 45mm      2-M8 x 50mm

**Note: This is a partial bumper replacement bullbar. The cars' plastic bumper must be cut laterally.**

1. Remove all clips and bolts holding on bumper and sumpguard
2. Remove the factory sump shield
3. Remove the 10mm screws that secure the bottom of the guard shields
4. Unplug fog lights
5. Remove headlight washer covers (if fitted)
6. Using the measurements in the photos (use a metal rule); measure the top of the bar with a marker pen or you can use cutting template provided. Using masking tape, follow the line to make sure its straight. (Refer to images on pages 6 and 7 for Measuerments)
7. Disconnect from camera from body of car, Remove the previously marked bar, Remove reinenforcement bar. For cars fitted with headlight washers, carefully unclip washer hose, then use zipties to hold up.
8. Disconnect the AGSS plug, unclip air temperture sensor. Remove AGSS panel then cut edges off AGSS panel, locator pins and air directors (as pictured below(do this to both sides))



Cut back to metal support frame  
(Do to both sides)



Cut locator pins off (Do to both sides)

Cut air directors off (Do to both sides)

9. Remove fog lights from lower half of plastic bar and camera from top half of plastic bar. After, strip harness of its holding clips then feed camera harness into hole on face of bar; Install into bullbar using supplied M6 bolts and washers and 2 Stainless steel screws (refer images 1 and 2 on page 3)
10. Using the M8 x 40mm bolts, attach the steel mounting bar provided in replacement of the original reinforcement.
11. Attach AGSS panel, using the 2 supplied M6 bolts and the 4 factory bolts, fit the AGSS panel to steel mounting bar
12. Cut the original plastic bar along previously marked line. Attach pinch weld to top bar (use a small hammer or piece of wood)
13. Refit top bar to car
14. Fit bullbar to car using the M12 x 35mm bolts, washers and nyloc nuts, align bar and tighten, plug in fog lights. Then reconnect camera (Refer to image 3 on page 3)
15. Fit side metal splash guards to the outer side of bullbar using the self drilling screws provided. (refer to Image 7 on page 5)
16. Screw guard liners to metal shields being careful not to damage washer bottle. Trim excess plastic away
17. Using the 2 supplied Nylon spacers, remove film off tape and fit over old mount holes (Refer to image 4 on page 4)
18. Bend the guard liner tabs up (Refer to image 5 on page 4) then fit centre lower shield. **DO NOT! Screw up the side of the lower centre shield to side splash guards, Leave till last after sumpguard is fitted! (Refer to Image 7 on page 5)**
19. Place sump guard over lower centre shield. Using 2 supplied M8 x 45mm bolts and washers loosely bolt front of sump guard to previously used holes
20. Using 2 supplied nylon spacers, remove film off tape, place into position then bring sumpguard into position, using supplied M8 x 50mm bolts and washers loosely bolt rear of sumpguard to old mount holes (Refer to image 6 on page 5)
21. Position sumpguard for best fit, checking for clearance with exhaust pipe and bracket near front bolts. Tighten all bolts on sumpguard.
22. Using metal self drilling screw, screw the lower centre shield to side splash guards
23. Refit the factory clips in bar and headlight washer covers (if fitted)

Image 1



Unclip from body  
and feed behind  
headlight

Image 3

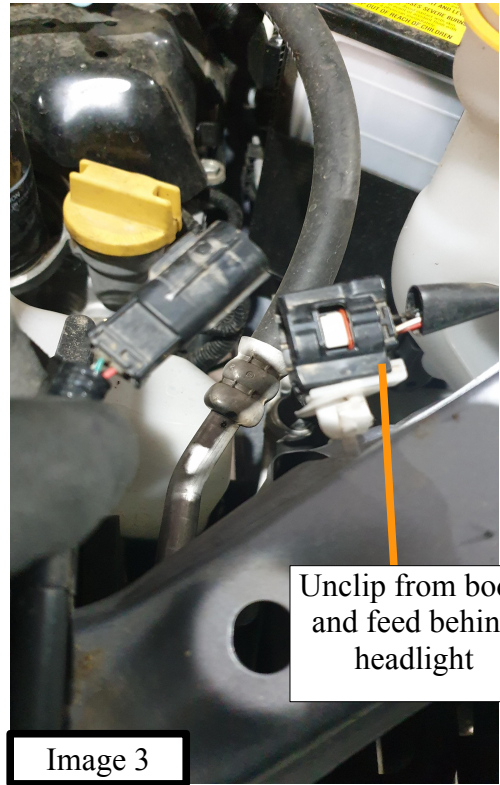
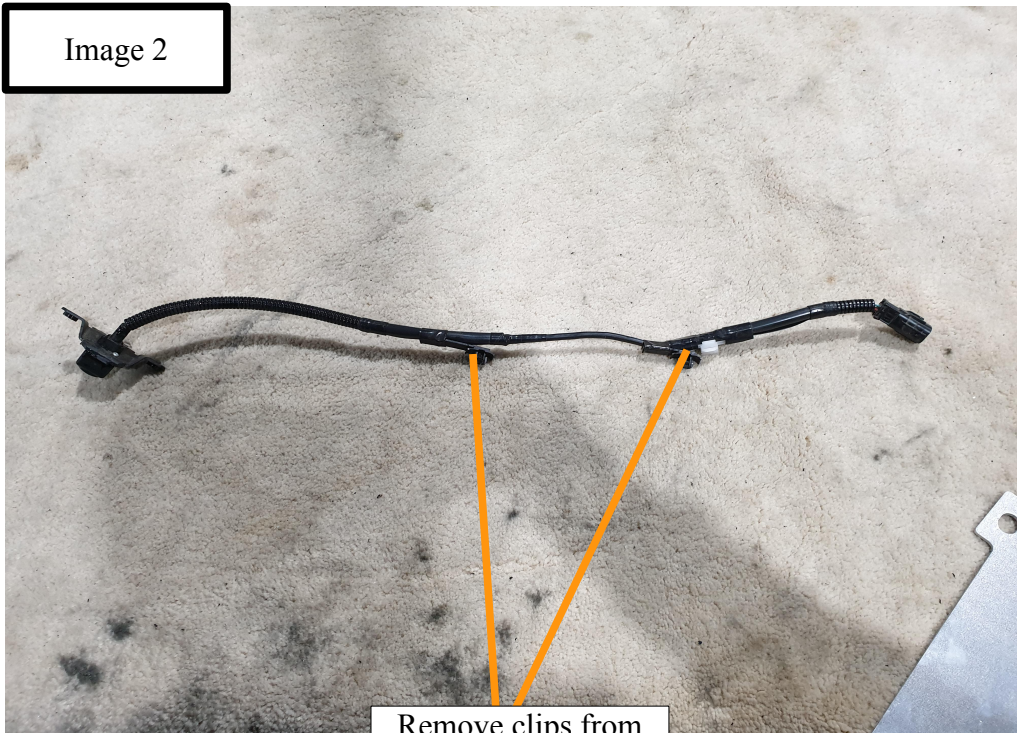


Image 2



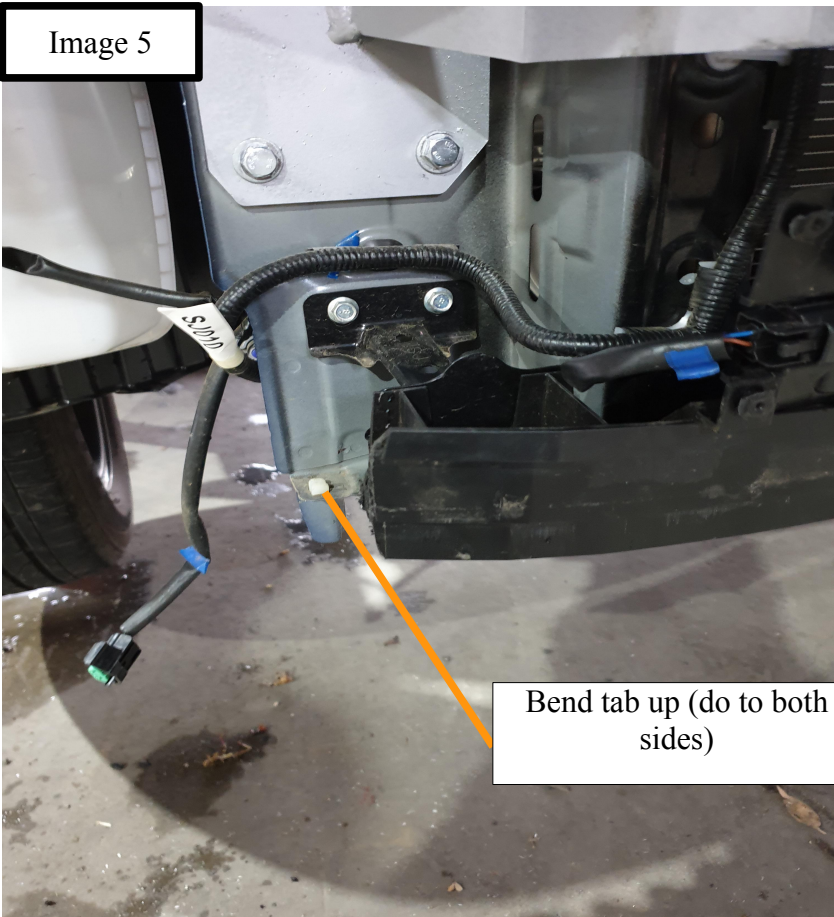
Remove clips from  
harness

Image 4



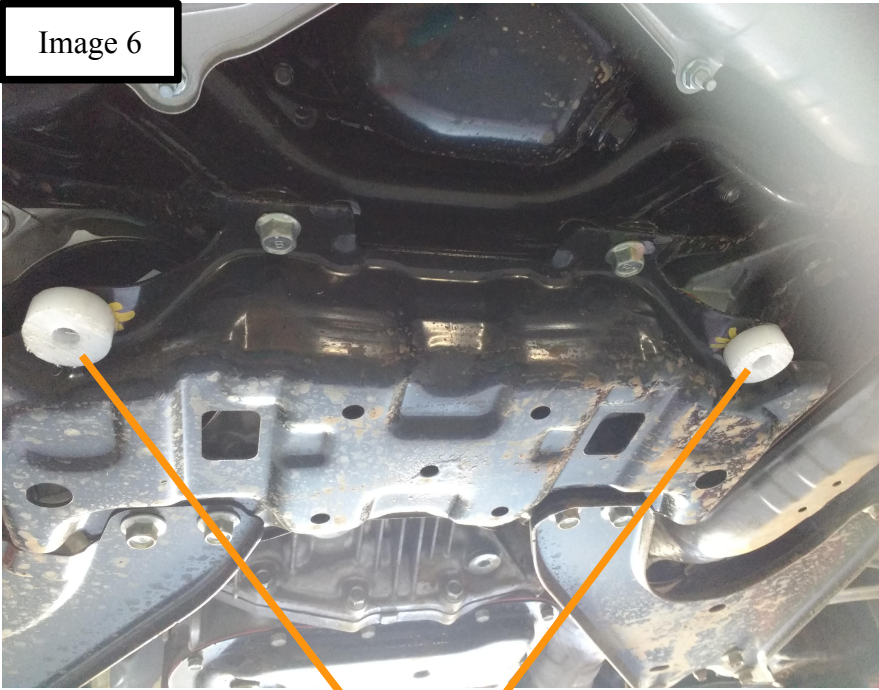
Fit Nylon spacers over the 2 factory bolt holes (use bolts to help align spacers)

Image 5



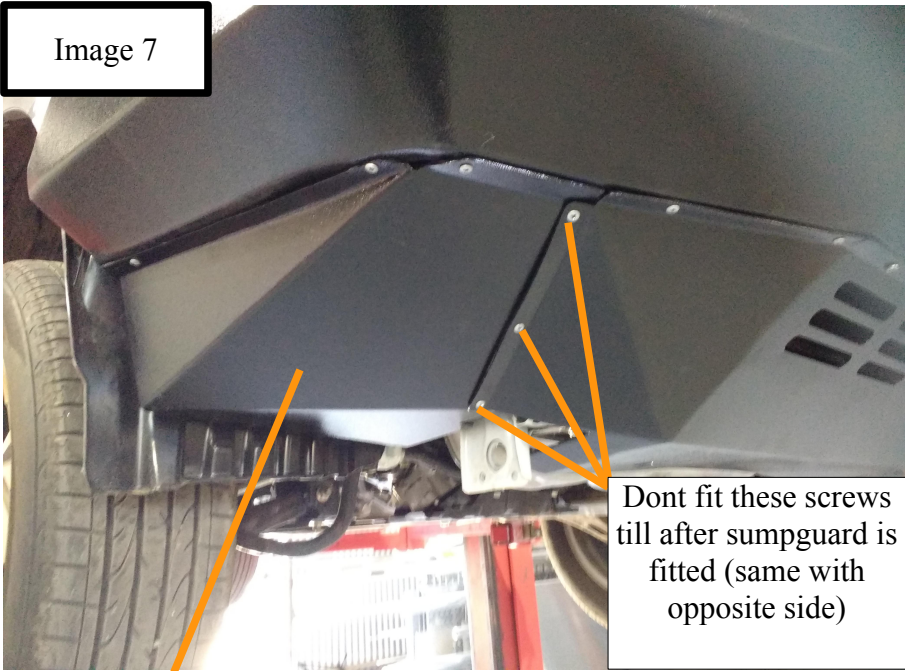
Bend tab up (do to both sides)

Image 6



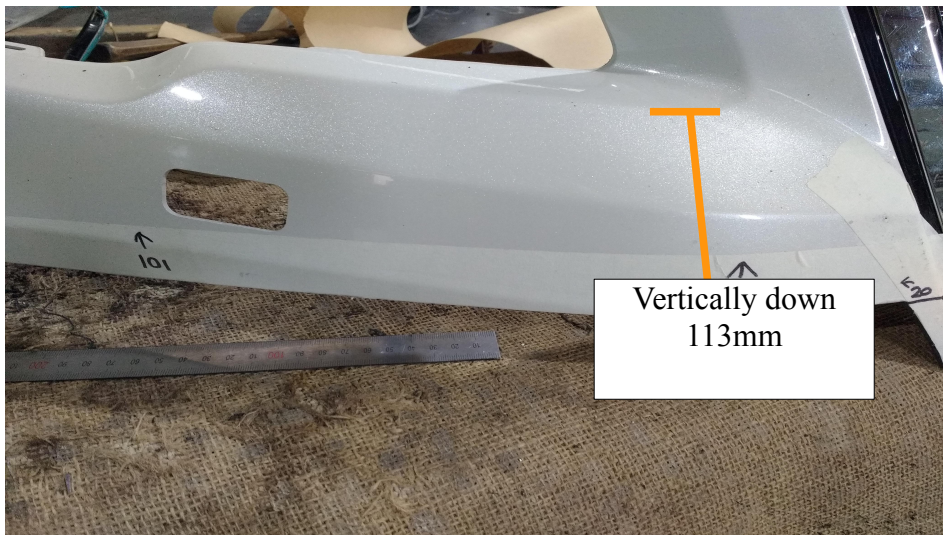
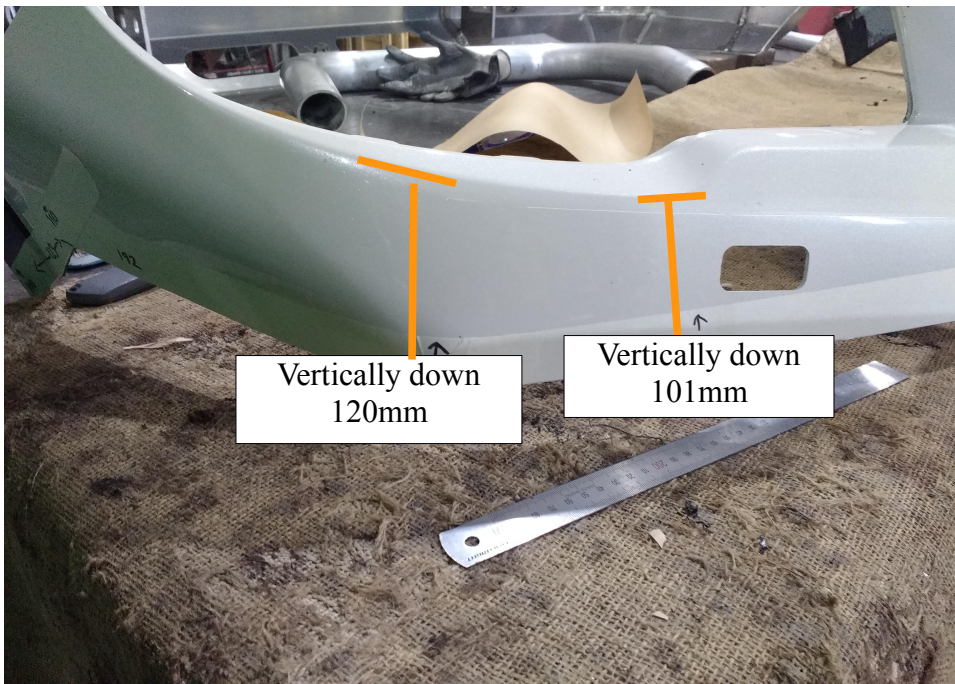
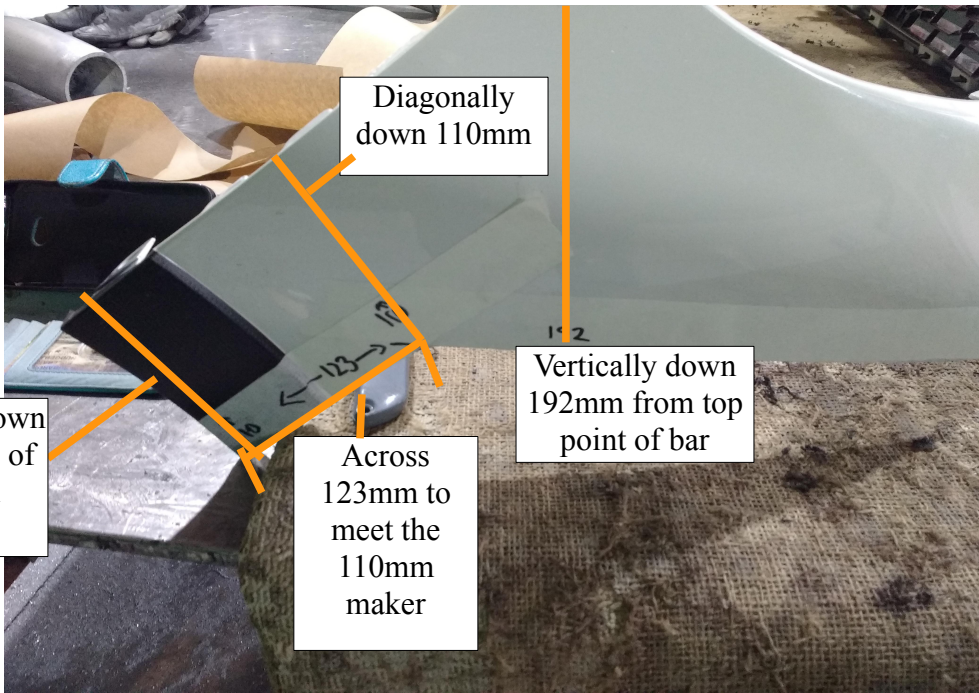
Fit Nylon spacers over the 2 factory holes  
(Use Bolts to help align spacers)

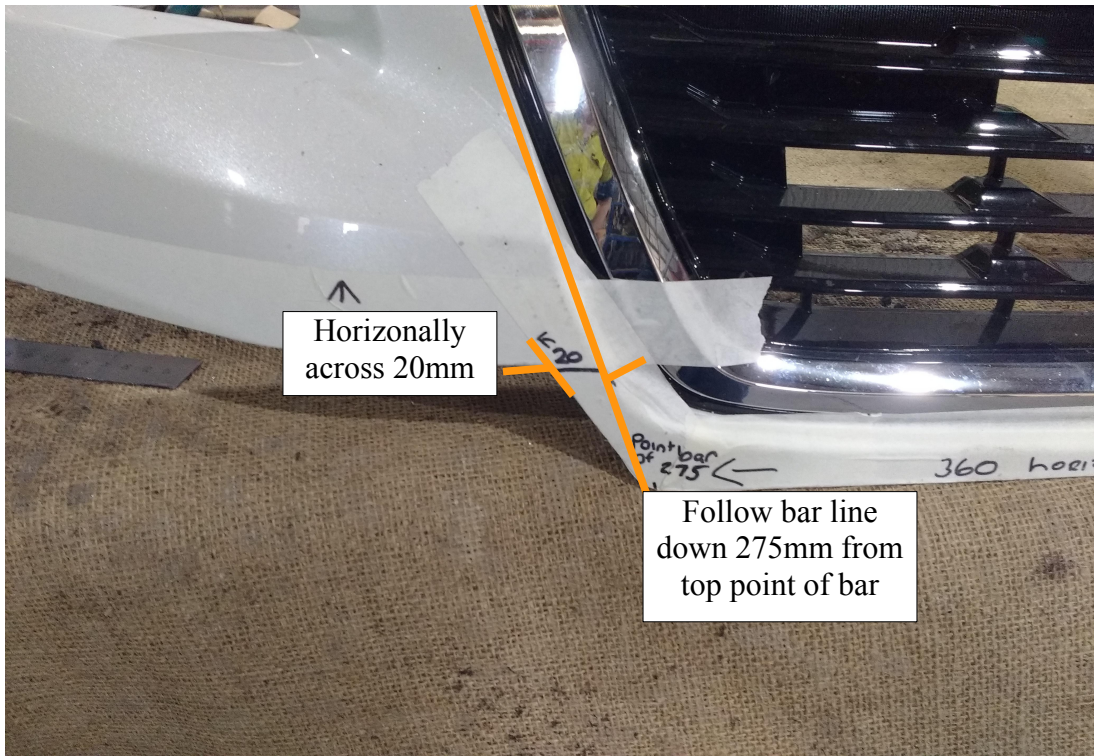
Image 7



Fit side shield to outer side of bullbar

Dont fit these screws till after sumpguard is fitted (same with opposite side)





This is a complex fitting bar, so follow intructions carefully. If you have any trouble do not hesitate to call or email us and any feed back would be mush appreciated.

Regards  
SUBAXTREME PTY LTD