

Sumpguard Component List

- Fitting instructions
- Aluminium sumpguard
- 1 x 10mm nylon spacer
- 1 x M8x35mm bolt
- 1 x M8 SG washer
- 2 x M10x35mm bolts
- 2 x M10 washers
- 2 x M10 nutserts (rivet nuts)
- 1 x nutsert installation kit

Tools Required

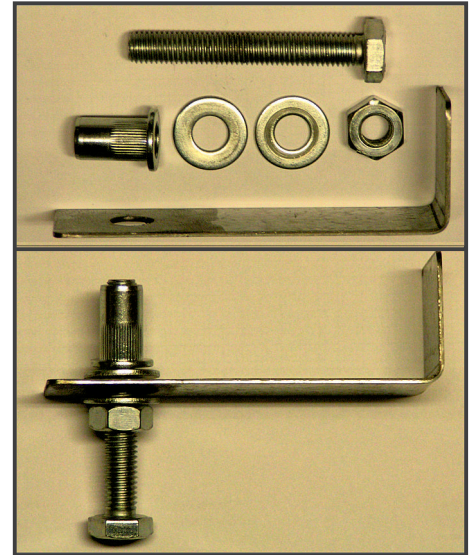
- Car ramps, chassis stands or hoist
- Clip removal tool or flat blade screwdriver
- 12mm, 13mm, 17mm sockets + ratchet drive
- 17mm spanner

Nutsert Installation Kit

YouTube

<https://www.youtube.com/watch?v=AfQIYLSKGwI>

- L-bracket
- M10x75mm bolt
- M10 plain nut
- 2 x M10 washers



Fitting Instructions

YouTube

<https://www.youtube.com/watch?v=Dbqrk-hmZh0>

1. Elevate front of vehicle safely – ramps, stands or hoist.
2. Remove 10 plastic clips from plastic sump guard.
3. Remove 3 bolts from plastic sump guard.
4. Remove plastic sump guard.
5. *Assemble components required to set nutsert as shown in photo above. (75x10mm bolt, nut, washer, angle, nutsert.)*
6. *Identify correct holes in car chassis to be 'threaded' and insert nutsert assembly in place.*

YouTube <https://www.youtube.com/watch?v=AfQIYLSKGwI>
7. *While holding bolt head still (important) with spanner, rotate nut (a little oil on washer and thread will help). Initially fair resistance will be felt as the assembly starts to deform, will then become easier and finally firm up again indicating that the nutsert is correctly positioned.*
8. *Remove bolt, nut and washer.*
9. Hold aluminium sump guard in position and loosely bolt using the 2 supplied M10x35 bolts with washers into nutserts at front. Fit the 10mm nylon spacer (if required), M8x35 bolt and M8 SG washer at the rear.
10. Position sump guard for best fit, checking for clearance between exhaust, turbo (if fitted) and sump guard then tighten all bolts.
11. Stand back. Admire handiwork and NEW SubaXtreme sump guard!