

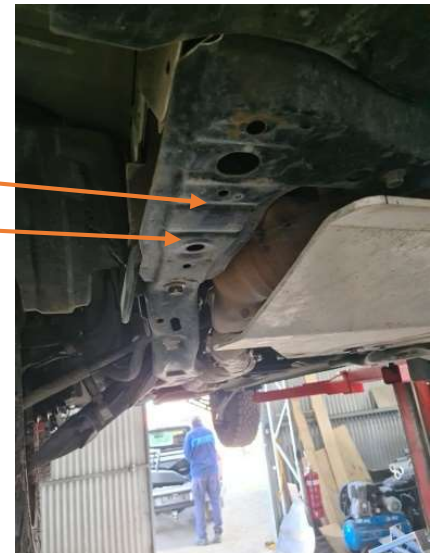


**Fitting instructions
for 09-12 SH 057
Forester Recovery
points.**

Components List:

6 x M8 X 30 mm bolts	2 x M8x35mm bolts
6 X M8 Nyloc nuts	2 x panel washers
12 x M8 washers	2 x side section of recovery points
1 x centre section of recovery point	

1. Where possible elevate the front of the vehicle safely
2. Remove factory splash guard or Subxtreme sump guard from vehicle
3. Remove 2 bolts from both sides of subframe, identical on either side (seen in pic 1)
4. Using the removed bolts, secure each side section of the recovery points to the subframe using the same bolt holes that were removed previously.
5. Do the same on the other side, both are identical
6. Slide the recovery point centre section into the middle of each of the side section's and using 3 x M8x 30MM and washers on each side and then tighten all bolts.
7. Using the 2 x M8x35mm bolts secure the centre section of recovery points to the lower radiator support and tighten all bolts



Notice: you may want to remove front bumper fascia before installing the recovery points to gain more access to front section of recovery points bolt holes.