

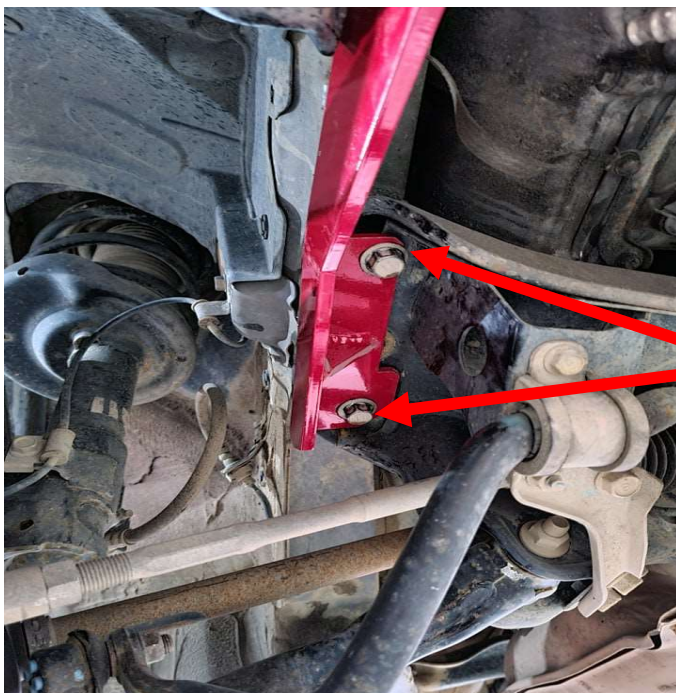


Fitting instructions for
SK Forester Recovery
points RP-059

Components list:

6pcs – M8 X 30-GR8.8 Hex Bolts	10,12,13,17,19mm sockets
6pcs – M8 nylock nuts	10,12,13,17,19 spanners
12pcs – 8mm washers	Ratchet & 2" Extention to suit sockets
2pcs – 15mm high alloy spacers	Torque wrench suitable for sockets
2pcs – M8 X 40-GR8.8 Hex Bolts	Flat head screwdriver OR Clip removal tool
2pcs – 40mm OD panel washers – 9mm hole	

1. Elevate the front of the vehicle safely (chock rear wheels).
Using a clip removal tool or a flat head screw driver, remove factory splash guard or Subaxtreme sump guard from vehicle.
(Notice: you may want to remove front bumper facia before installing the recovery points to gain better access for tools when tightening bolts, this is not necessary however).
2. Remove the 2 x factory bolts from one side of subframe, (leave opposite side tight), fit the correct Recovery Point sideplate (flat side of sideplate should be facing in) replace the bolts you removed LOOSELY, and then repeat on opposite side of car,



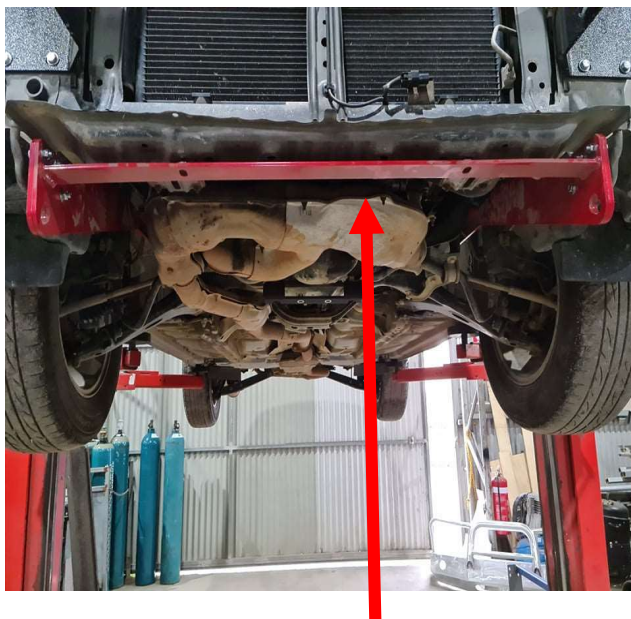
(passenger side shown below).

Factory Bolt

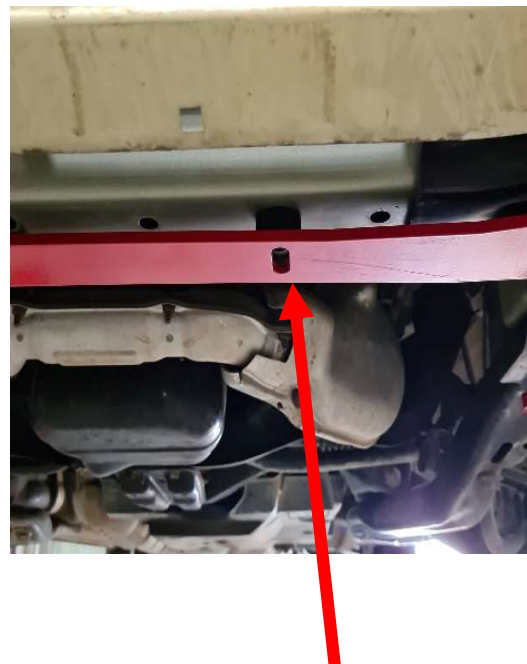


**3 x M8 x 30mm bolts
and nyloc nuts
mentioned in step 3**

3. Slide the recovery point centre section up between each of the side section's. Using 3 x M8x30mm bolts, Nyloc nuts and matching washers on each side, loosely bolt the centre recovery section and the side plates together. You will need to sandwich the two 15mm aluminium spacers between the central recovery point section and the lower radiator support over the slotted holes



Central Recovery point section



**Aluminium spacers fit here
between red part and chassis**

4. Using the 2 x M8x40mm bolts and 40mm OD panel washers, secure the centre section of recovery points to the lower radiator support. Making sure the spacers are sitting central over the slotted holes
5. TIGHTEN ALL BOLTS - (M12 bolts to 143Nm – and M8 bolts to 29Nm) and then replace factory splash guard, OR Subaxtreme sump guard.
6. If you removed your bumper fascia as suggested in step 1, refit it.

PLEASE NOTE: SOME TRIMING OF FACTORY SPLASHGUARD OR SUMP GUARD MAY BE REQUIRED TO FIT IN UNISON WITH RECOVERY POINTS.

*******NOTICE: THESE RECOVERY POINTS ARE NOT DESIGNED FOR SNATCHING OF YOUR VEHICLE, AND PERMANENT DAMAGE TO YOUR CHASSIS MAY OCCUR IF YOU TRY TO SNATCH YOUR VEHICLE USING OUR RECOVERY POINTS OR THE FACTORY TIE-DOWN POINTS *******

RECOVER YOURSELF SLOWLY AND ENJOY THE REST OF YOUR ADVENTURE