



**Fitting instructions for  
Subaru Crosstrek 12'-17'  
Rock Sliders RS-071**

**Components list:**

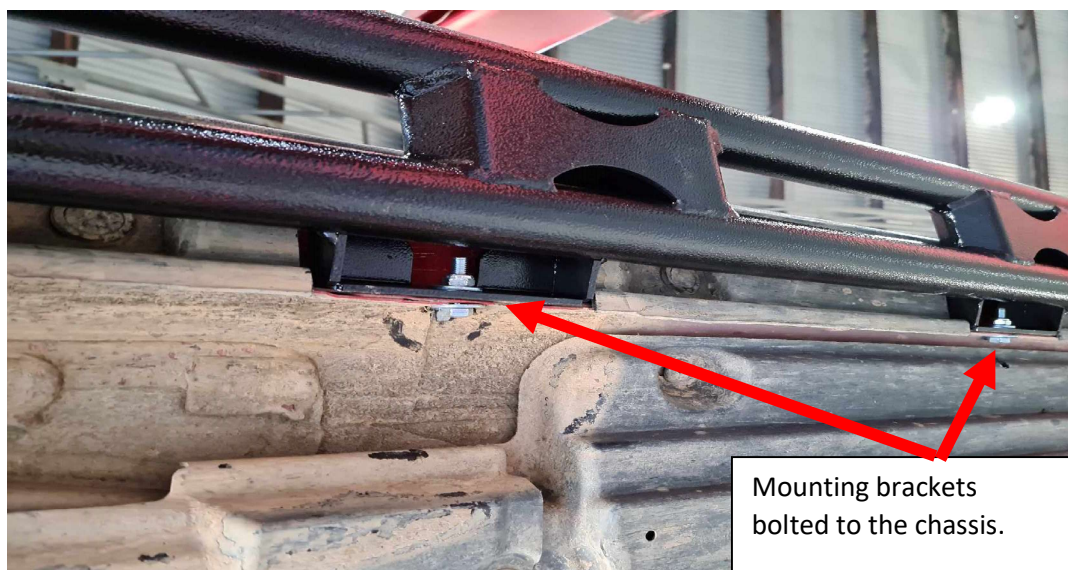
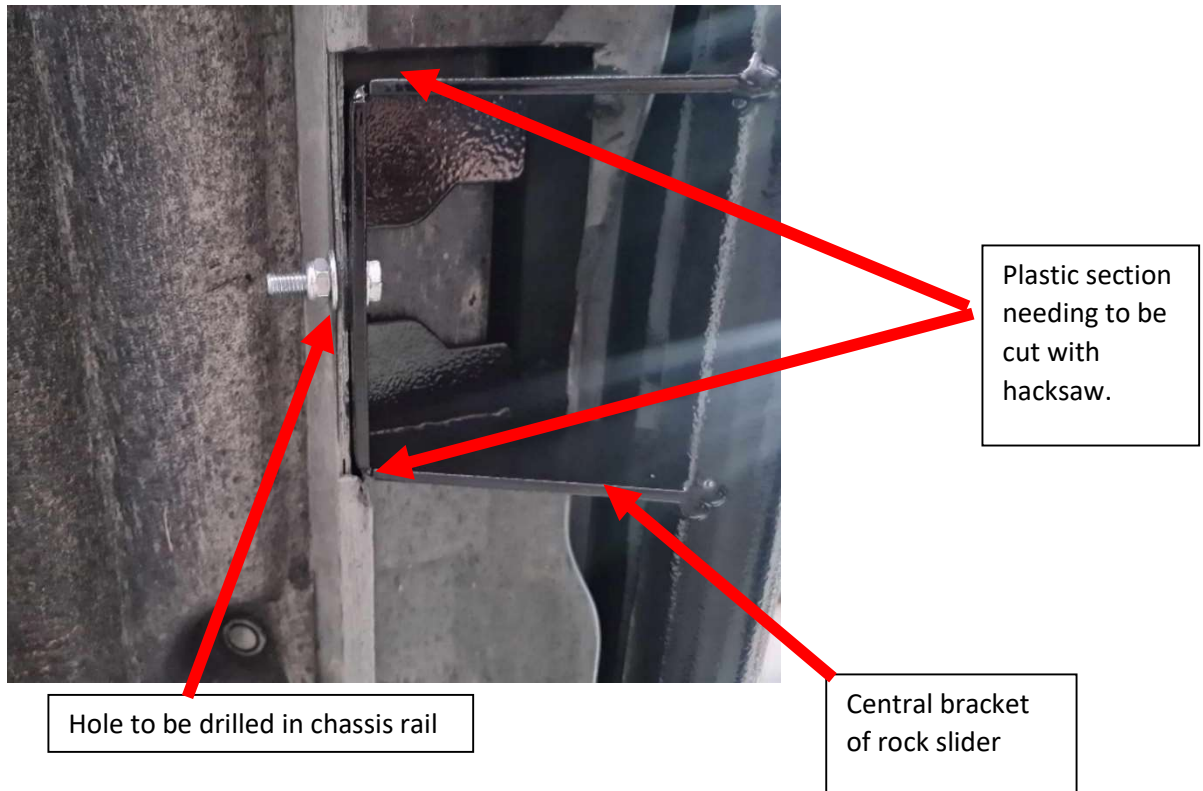
12 - M8 x 30mm Bolts	6 – M8 x 25mm bolts
12 - M8 Large panel washers	12 – M8 standard washers
6 – M8 Nyloc nuts	4 – Rock slider mounting brackets 2 LH/ 2 RH
4 – small rock slider clamping plates	2 – Rock Sliders

**Tools required:**

Trim clip removal tool or flat head screwdriver aswell as a Phillips head screwdriver	13mm spanner
socket & ratchet kit with 12, 13, 14	Power drill
If fitted with a lift kit, will also need 16mm sockets, 21 mm socket & 19mm sockets	Hammer
4mm & 9mm Drill piece (HSS pieces if possible)	Permanent marker
Hacksaw	Centre punch

**Initial installation process**

1. This installation process should be carried out using a 4-post car hoist, 4 car ramps is a suitable alternative. situate your vehicle into its lifted position. All following steps are to complete one rock slider installation, follow the same steps to install both left- and right-hand sides.
2. You will need to trim 3 small rectangular sections out of the plastic cladding on your vehicle to allow for the rock slider mounting brackets to be mounted to the chassis. Hold the rock slider in place against the body of the vehicle, if you are installing alone then a set of clamps can be useful. Using your marking pen, mark the centre hole of each mounting bracket on the plastic cladding where each bracket will meet the chassis. The end of the rock slider will meet the wheel arch exactly on each end of the body so make sure to not have the rock slider to far forward or back on the body. Measure from each hole that was marked 65mm to the left and 65mm to the right and mark with a marker. This is the section you will need to cut. Repeat this process for each mounting bracket.



3. You will also need to remove the factory mudflaps from the front wheel arches, there is one clip and two screw holding this part on. There is some trimming required of the Mudflap, a picture of the modification is below.
4. Use a trim clip removal tool or a flat head screwdriver, to remove all trim clips from the plastic body cladding and fully remove the cladding.
5. Use a hacksaw or Dremel tool to cut the section as shown in picture above. Be sure to only cut the first level of cladding as cutting both

sections will cause cladding to break into two pieces, we want the cladding to be kept in one piece.

6. Once the cladding is removed from the vehicle, hold the rocksliders against the vehicle again and mark the central hole of each mounting bracket. Use a Centre punch to mark the hole first, then start off with the 4mm drill bit and move up to the 9mm bit. Once each hole has been drilled, apply some black spray paint lightly around the hole to avoid rust and corrosion forming.
7. You will need to modify your front mudflap to allow the rock slider enough room to fit along the body. The picture below shows the cut out that needs to be taken from the mud flap



Rectangular section cut from the mudflap to allow rock slider enough room to fit.

## Installing Rear rock slider bracket

1. To install the rear bracket of the rock slider kit, as seen in photo below fully remove the two bolts indicated in photo from the subframe bracket, then loosen the bolt at the rear of this bracket. Slide the rock slider mounting bracket between the subframe bracket and the chassis. **If your vehicle is fitted with a lift kit as the vehicle pictured does, you will need to make sure the subframe spacer that is installed as a component of your lift kit is kept in the correct position, in this case the rock slider mounting plate is mounted between the subframe spacer and the chassis of the vehicle.**



Subframe spacer  
be careful to leave  
this in the correct  
position.

Remove the two 12mm subframe bolts and  
slot bracket between chassis and subframe  
or subframe spacer, these will be 14mm  
bolts if you have a lift kit installed

Loosen rear bolt on bracket, this bolt must  
be re bolted to Torque spec the correct  
specifications are 107ft/lb or 145NM

2. When setting the rock slider mounting brackets in place it is important to place them correctly, so the sliders sit evenly on the vehicle. As seen in photo below there needs to be 70mm of the bracket hanging out past the chassis rail for rear bracket.
3. Replace and tighten the factory bolts into their respective holes.  
140 Newton metres torque setting

### Installing Front rock slider bracket



Rock slider Mounting bracket sandwiched between chassis and subframe bracket

Completely remove these two bolts

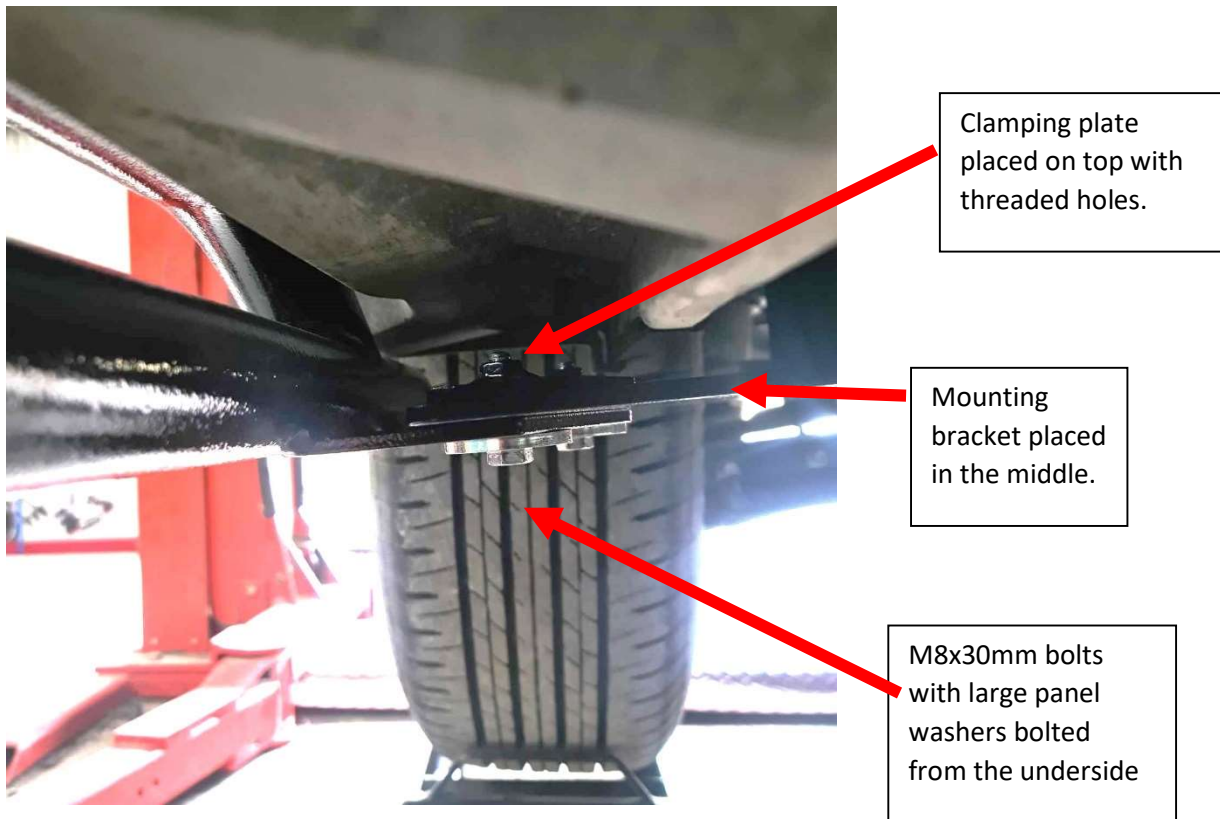
Loosen off other bolts on this subframe bracket

4. To install the front Rock slider bracket, similar steps as with the rear mounting bracket will be followed. As seen in photo above, completely remove the two indicated bolts from the subframe mounting bracket, loosen the rest of the bolts holding this subframe bracket to the chassis,. Slide the rock slider bracket between the subframe bracket and the chassis sandwiching them together.

5. When setting the rock slider mounting brackets in place it is important to place them correctly, so the sliders sit evenly on the vehicle. As seen in step 8, there needs to be 8cm of the rear bracket hanging out past the chassis rail for the front bracket.
6. Replacing and tightening the factory bolts into their respective holes.  
**145 Newton metres torque setting**

### **Installing rock sliders**

8. Now that Mounting brackets are in place, locate Rock slider clamping plates as well as 3x M8x30mm bolts & 3 large panel washers per mounting plate. It is good practice, to prepare a little for the next steps as if you are completing this step alone, or you are mounting these on car ramps then trying to maneuverer the rock sliders can get difficult from the floor. To prepare simply place a large panel washer on each of the M8x30mm bolts and have them within easy reach of you and the mounting brackets.
9. To begin rock slider installation, Place a clamping plate on top of the front mounting bracket and line the holes on the clamping plates up with the slotted holes on the mounting bracket.
10. Hold rock slider in place along the vehicle, using some help where possible or some sort of stand to hold the rock slider level to the car.
11. Using the M8x 30mm bolts and large panel washers place the bolts from the underside of the rock slider through the slotted holes in the mounting bracket and up into the threaded holes in the clamping plates. Keep bolts finger tight at this point to allow for some adjustment if needed.



12. Repeat this step for rear bracket, Keep nuts and bolts finger tight at this point to allow for adjustments.
13. Using the M8x20mm bolts, standard M8 washers and Nyloc Nuts provided, secure the three rock slider brackets to the chassis rail using the holes that were drilled earlier in **Step 6**.
14. Now rock slider is in place adjust the slider close to the vehicle while making sure you still have enough clearance to open your doors, while also making sure slider does not overhang into the wheel well on either end of the vehicle.
15. Tighten bolts to secure the slider into its set position.
16. Repeat all steps for the opposite side of the vehicle being sure to tighten all bolts at the end.

**Important notice: please make sure that the large bolt at the back of the subframe brackets is bolted up to the correct torque specs**  
**Torque specs are: 145 Newton Metres**