

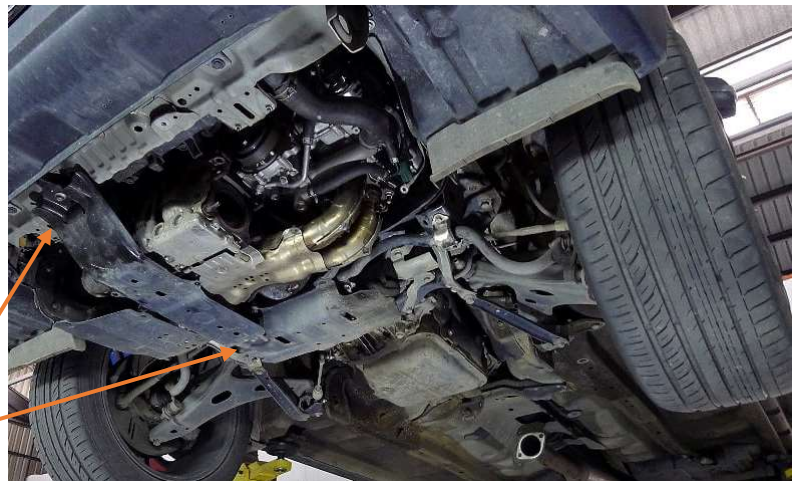


Fitting
instructions for
SG-058 XT

Components List :

2 X M8 x 35mm Bolts	4 x Panel washers
2 X 26mm Aluminium spacers	2 x M8 x 45mm bolts
Aluminium sump guard	

1. If possible safely lift the front of the vehicle and remove original factory plastic sump guard
2. Identify the two large steel black/grey cover plate (only right hand side plate pictured) that sit over the turbo and exhaust and remove two bolts from each.



3. Once these plates have been removed, fit spacers to the rear as seen in the picture. Making sure to have spacers between sump guard and vehicle.



4. Hold the sump guard in position. Using two supplied M8 x 45 mm at the rear of sump guard attach to car and leave bolts loose to account for adjustments.
5. Using two M8x 35mm bolts and two large panel washers attach the front of the sump guard to the vehicle, adjust and then tighten all bolts.