

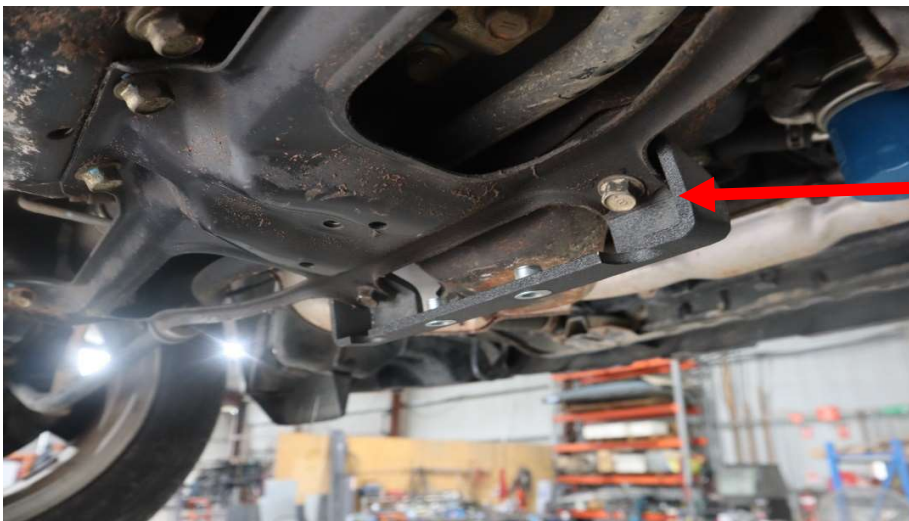


Fitting instructions for
TG-057 - 5EAT
Transmission Guard

Components list:

2 x M8 x 35mm Bolts	1 x Transmission guard mounting bracket
2 x Panel Washers (4 if no sump guard)	Subaxtreme SG-057 Sump guard mounting bracket (required)
1 x Transmission guard	2 x M8 x 35mm bolts If customer has no Sump guard (extra)

1. If your vehicle already has a Subaxtreme sump guard, loosen the rear bolts and panel washers of the sump guard slightly allowing enough room to slide the transmission guard between the bracket and the sump guard. If your vehicle does not have a sump guard, then mount the provided sump guard mounting bracket as shown below using the existing factory bolts from the subframe to mount by clamping this bracket between the subframe and the body of the vehicle.

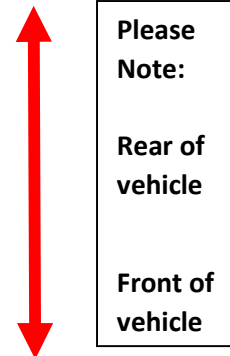
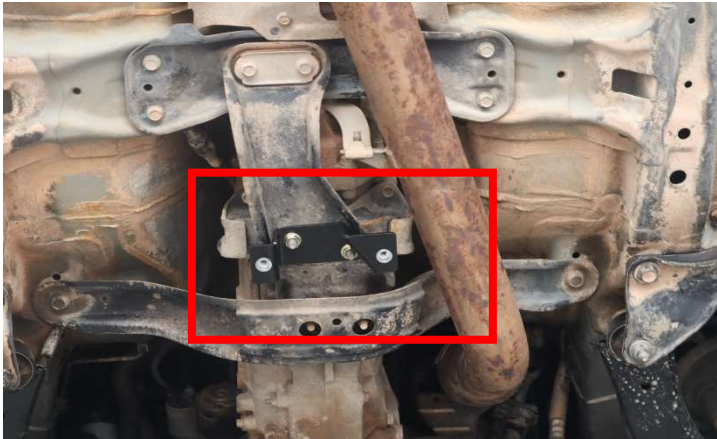


Factory bolts to be kept



Loosen sump guard bolts to allow space for transmission guard

- Using the factory subframe bolts that are already in the space, Mount the smaller rear transmission bracket into the gap shown in the photo below with the subframe bolts. Make sure to mount the bracket in the correct direction with the angled side of the bracket following the shape of the subframe.



- Now that both mounting brackets are in place it is good practice to get your bolts ready with the large panel washers already on them to make the following step easier.
- If you have a Subaxtreme sump guard and you have loosened the rear bolts, then you will need to slide the transmission guard between the sump guard and the mounting brackets. The front of the transmission guard holes are slotted to help achieve this goal, ideally you would be using both products in unison. If you do not have a Subaxtreme sump guard, then bolt the additional 2 x M8 x 35mm bolts and panel washers into the extra sump guard bracket and slide the slotted front end of the transmission guard onto these two bolts and finger tighten.
- Now that the front of the guard is in place, use the provided M8x 35mm bolts and large panel washers to secure the rear of the transmission guard to the bracket at the rear that was placed in the step 2, finger tighten bolts.
- Tighten front bolts of transmission guard/ sump guard, sandwiching the transmission guard between the sump guard and the sump guard mounting bracket.
- Tighten all bolts using a socket and ratchet or a ratchet gun, now your transmission guard is installed.
- Enjoy your travels.